

602L

ดัดเบิ้ลล็อกประตูแม่เหล็กไฟฟ้า 600ปอนด์ X2 มี LED

- MAGNET : 532L x 73H x 40D
- ARMATURE PLATE : 185L x 61W x 16T
- SURFACE MOUNTED
- CURRENT DRAW :
- 500mA/12V, 250mA/24V
- DUAL VOLTAGE : 12V OR 24V



6L

ล็อกประตูแม่เหล็กไฟฟ้า 600 ปอนด์ มี LED

- MAGNET : 286L x 73H x 40d
- ARMATURE PLATE : 185L x 61W x 16T
- SURFACE MOUNT
- CURRENT DRAW : 600mA/12V,300mA/24V
- DUAL VOLTAGE : 12V / 24V



12L

ล็อกประตูแม่เหล็กไฟฟ้า 1,200 ปอนด์ มี LED

- MAGNET : 286L x 73H x 40d
- ARMATURE PLATE : 185L x 61W x 16T
- SURFACE MOUNT
- CURRENT DRAW : 600mA/12V,300mA/24V
- DUAL VOLTAGE : 12V / 24V



MLM01

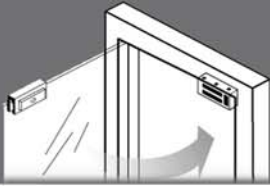
Shear lock 600 lbs. Signal , Timer (ติดพื้นดิน)

- MAGNET : 270mmL x 35mmH x 30mmD
- ARMATURE : 245mmL x 35mmW x 30mmD
- SIGNAL :
- LOCK STATUS SENSOR (HALL), TIMER
- CURRENT DRAW : 1.6A/12VDC, 900mA/24VDC
- HOLDING CURRENT : 0.4A/12VDC, 0.3A/24VDC
- DUAL VOLTAGE : 12V / 24V
- BUILT-IN VOLTAGE SPIKE SUPPRESSOR
- CE APPROVED



The manufacturer reserves the right to change the specification and technical data of device.
The picture may vary from the real product.





250S

ล๊อคประตูแม่เหล็กไฟฟ้า 200 ปอนด์ With L Brwacket

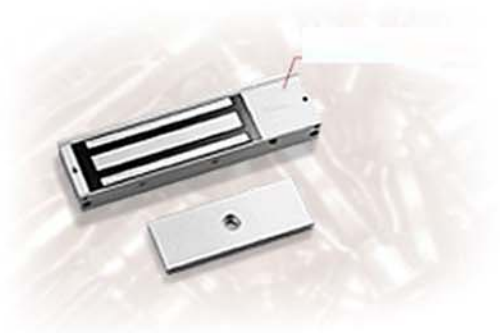
- FACE MOUNTED & SIDE MOUNTED
- STAINLESS STEEL HOUSING
- CURRENT DRAW : 500mA/12V, 250mA/24V
- DUAL VOLTAGE : 12V/24VDC



350

ล๊อคประตูแม่เหล็กไฟฟ้า 300 ปอนด์

- MAGNET : 286L x 73H x 40d
- ARMATURE PLATE : 185L x 61W x 16T
- SURFACE MOUNT
- CURRENT DRAW : 600mA/12V,300mA/24V
- DUAL VOLTAGE : 12V



6S

ล๊อคประตูแม่เหล็กไฟฟ้า 600 ปอนด์

- MAGNET : 286L x 73H x 40d
- ARMATURE PLATE : 185L x 61W x 16T
- SURFACE MOUNT
- CURRENT DRAW : 600mA/12V,300mA/24V
- DUAL VOLTAGE : 12V



600R

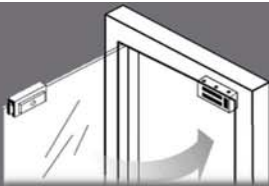
ล๊อคประตูแม่เหล็กไฟฟ้า 600 ปอนด์ แบบมีปีก 2 ข้าง
สำหรับกรอบประตูอลูมิเนียมแบบเลื่อน (MORTISE)

- MAGNET : 228mmL x 38mmH x 27mmD
- ARMATURE PLATE : 185mmL x 38mmW x 12.5mmT
- MORTISE MOUNTED
- CURRENT DRAW : 500mA/12VDC, 250mA/24VDC
- DUAL VOLTAGE : 12V / 24V



The manufacturer reserves the right to change the specification and technical data of device.
The picture may vary from the real product.





ZL350

L/Z Bracket for 350



ZL600

L/Z Bracket for 600



ZL602

L/Z Bracket for 602



ZL1200

L/Z Bracket for 1200



U350

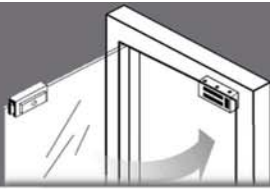
U Bracket for 602



U600

U Bracket for 600





ML-200SLD

ELECTRIC BOLT (สำหรับประตูกระจกบานเลื่อน)

- BODY : 200mmL x 34mmW x 42mmD
- COVER PLATE : 210mmL x 42mmW x 0.8mmD
- FACE PLATE : 200mmL x 34mmW x 3mmD
- STRIKE PLATE : 90mmL x 24mmW x 27mmD
- BOLT : S/S 15.5DIA. WITH 16MM THROW
- CURRENT DRAW : 0.9A/12VDC (PULL-IN CURRENT)
- HOLDING CURRENT : 0.3A/12VDC
- VOLTAGE : 12VDC OR 24VDC
- ML200SLD: WITH LOCK AND DOOR STATUS SENSOR.
- OPTIONS :
- SL: LOCK STATUS SENSOR
- SD: DOOR STATUS SENSOR
- FAIL-SAFE : LOCKED WHEN ENERGIZED
- AUTO-RELOCK JUMPER



10A

BOX FOR ELECTRIC BOLT OR "U" BRACKET FOR BOLT BOX



10B

"U" BRACKET FOR GLASS DOOR



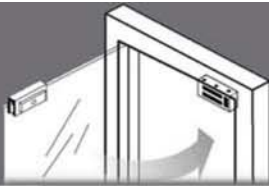
10A/B

ELECTRIC BOLT BOX AND "U" BRACKET (SET)



The manufacturer reserves the right to change the specification and technical data of device.
The picture may vary from the real product.





Aluminum Clip

ELECTRIC BOLT (สำหรับขอบกระดานเปลือย)

- BODY : 45mm (L) x 90mm (W) x 25mm (H)
- TYPE : Aluminum



Stainless Clip

ELECTRIC BOLT (สำหรับขอบกระดานเปลือย)

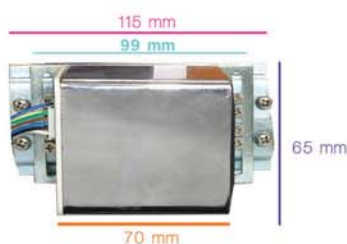
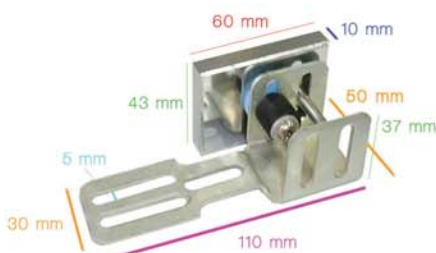
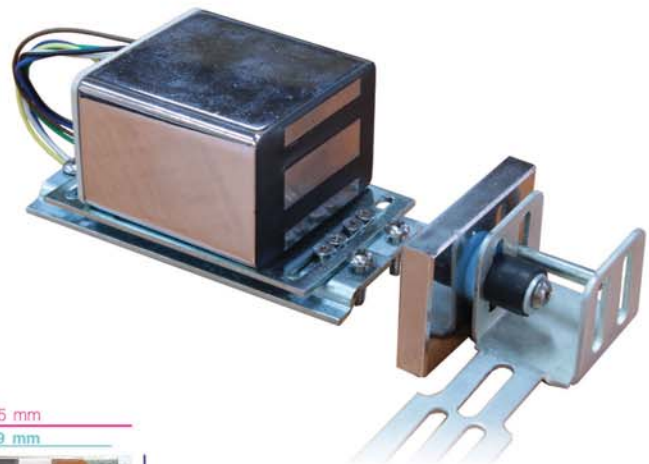
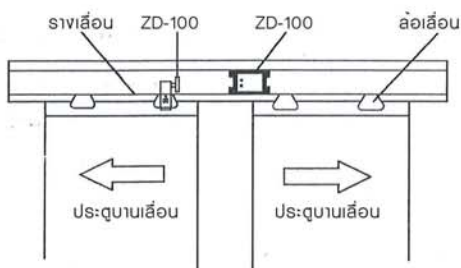
- BODY : 48mm (L) x 93mm (W) x 37mm (H)
- TYPE : Stainless



ZD-100

ล็อคสำหรับประตูอัตโนมัติ (Auto Door) 220 โปนต

- VOLTAGE : 220 Vac
- CURRENT : 150 mA



The manufacturer reserves the right to change the specification and technical data of device.
The picture may vary from the real product.

