



MAGNETIC CONTACT

อุปกรณ์ป้องกันการจัดอเนประตุ หน้ต่าง ๆ

ST157 : STEEL DOOR RECESS CONTACTS



- GAP : over 35mm.
- For loose-fitting windows and doors, steel door and Other applications where wide gaps are found
- Screw mounted with wire leads
- Surface mounted contact with recessed screws
- Size : 18mm x 51mm x 12mm
- N/C Contact (Normally Close)
- available in white

ST300 : HEAVY DUTY METAL CONTACTS



- GAP : over 20mm.
- For loose-fitting windows and doors, steel door and Other applications where wide gaps are found
- Screw mounted with wire leads
- Surface mounted contact with recessed screws
- Size : 18mm x 50mm x 10mm
- N/C Contact (Normally Close)
- available in white

ST333 : MINI PRESS MAGNETIC CONTACT



- GAP : over 15mm.
- 3/8" Stubby press fit ideal for thin frames
- Application : windows , casements , other tight spots
- leads for fast, neat installation
- Size : ϕ 9mm x 22mm
- N/C Contact (Normally Close)
- available in brown & white

ST336 : STEEL DOOR RECESS CONTACT



- GAP : over 40mm.
- Holds magnet or contact in place away from frame
- Size : ϕ 19mm x 25mm
- N/C Contact (Normally Close)
- available in brown

ST353 : ROLLER SHUTTER DOOR CONTACT

- GAP : over 50mm.
- Magnet enclosed in round bracket
- Rugged design protects reed against damage to housing
- Size : mount 50mm x 105mm, round bracket Magnet 20mm x 105mm x 20mm
- N/C Contact (Normally Close)
- available in white



ST354 : MAGNETIC CONTACT FOR ROLLER SHUTTER DOOR



- GAP : over 70mm.
- Magnet enclosed in wall mounting bracket , Fixed ABS case
- Rugged design protects reed against damage to housing
- Size : mount 35mm x 100mm, Magnet 30mm x 10mm x 20mm
- N/C Contact (Normally Close)
- available in white

ST355 : MAGNETIC CONTACT FOR ROLLER SHUTTER DOOR



- GAP : over 70mm.
- Magnet enclosed in wall mounting bracket , Sliding ABS case
- Rugged design protects reed against damage to housing
- Size : mount 50mm x 120mm, Magnet 30mm x 10mm x 20mm
- N/C Contact (Normally Close)
- available in white

ST369 : MINI – MAG WITH SELF STICKY TAP



- GAP : over 20mm.
- Sleek sized surface mount can be screw or adhesive mounted
- Adhesive pads are pre-applied for fast easy installation
- Long wire leads from side
- Size : 14mm x 33mm x 10mm
- N/C Contact (Normally Close)
- available in brown & white

ST369S : MINI – MAG WITH SELF STICKY TAP



- GAP : over 10mm.
- Sleek sized surface mount can be screw or adhesive mounted
- Adhesive pads are pre-applied for fast easy installation
- Long wire leads from side
- Size : 13mm x 27mm x 7mm
- N/C Contact (Normally Close)

available in brown

HC-03C : MAGNETIC CONTACT RECESS DOOR



- GAP : over 15mm.
- 3/8" Stubby press fit ideal for thin frames
- Application : windows , casements , other tight spots
- leads for fast, neat installation
- Size : ϕ 9mm x 15mm
- N/C Contact (Normally Close)
- available in brown & white



The manufacturer reserves the right to change the specification and technical data of device.
The picture may vary from the real product.





MAGNETIC CONTACT

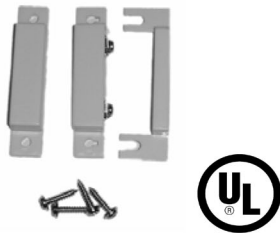
อุปกรณ์ป้องกันการจู่โจมประตู หน้าต่าง ฯลฯ

ST388 : MAGNETIC CONTACT WITH COVER & SCREWS NC



- GAP : over 25mm.
- Surface reed switch with screws, covers and spacers
- Traditional style surface mount
- Size : 13mm x 64mm x 12mm
- N/C Contact (Normally Close)
- available in brown & white

ST389 : MAGNETIC CONTACT WITH COVER & SCREWS NO

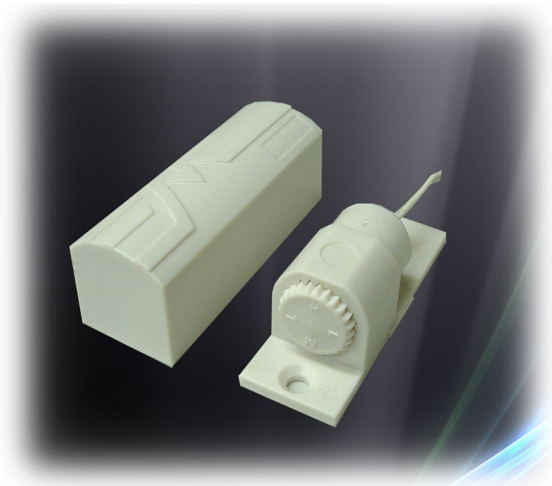


- GAP : over 25mm.
- Surface reed switch with screws, covers and spacers
- Traditional style surface mount
- Size : 13mm x 64mm x 12mm
- N/O Contact (Normally Open)
- available in white

VIBRATION CONTACT

อุปกรณ์ตรวจจับการสั่นสะเทือน

ST-370



- High reliability inertia devices with wire action
- with produces hermetically sealed self cleaning sensors. When installed they will respond to shock waves generated by attempted intrusion.
- Protects ceilings, walls, safes and glass
- Adjustable sensitivity, Small and inconspicuous
- Complete with mounting block and Clip-on cover
- Size: 22mm x 59mm x 22mm
- N/C Contact (Normally Close)
- Available in white

MAGNETIC CONTACT ชนิดมี UL

อุปกรณ์ป้องกันการจลตวปะระตุ หน้ต่ง ๑๑๑

■ ST-205



- N.O. contact for N.C. circuits.
- Screw flange breaks off for extra miniature size.
- Pre-wired 15" (38cm) leads extend from contact end.
- Available in brown, white.
- GAP: 1" (25mm).

■ DC-1621



- GAP : over 20mm.
- Hermetically Sealed Switch
- Rhodium Over Gold Reeds
- Application : windows , casements , other tight spots
- leads for fast, neat installation
- High Grade Magnets
- Durable Magnet
- Max. Contact Rating, 28VDC, 0.5A, 10W
- Size : f 9mm x 31mm
- N/C Contact (Normally Close)
- available in brown & white

■ MICRO MAG - W



- GAP : over 15mm.
- Hermetically Sealed Switch
- Rhodium Over Gold Reeds
- Application : windows , casements , other tight spots
- leads for fast, neat installation
- High Grade Magnets
- Durable Magnet
- Size : f 6mm x 13mm
- N/C Contact (Normally Close)
- available in white

■ ST-1011



- GAP : over 15mm.
- Hermetically Sealed Switch
- Rhodium Over Gold Reeds
- Application : windows , casements , other tight spots
- leads for fast, neat installation
- High Grade Magnets
- Durable Magnet
- Size : f 6mm x 13mm
- N/C Contact (Normally Close)
- available in white

■ ST-2021



- GAP : over 25 mm.
- Application : windows , casements , other tight spots
- Longer leads, zip cord or jacketed cable on request
- Size : 7mm x 33.5mm
- N/C Contact (Normally Close)
- available in brown & white

■ ST-217



- N.O. wide-gap contact for N.C. circuits.
- Wide 2" gap, yet contact is no longer than conventional surface mount contacts.
- For loose-fitting doors and windows, steel doors and other applications where wide gaps are found.
- Screw terminal for quick installation.
- Available in white
- GAP: 2" (51mm).